

StarTraq
Dome



Driving safety
through Enforcement
& Education



StarTraq Dome:

The next generation in enforcement

StarTraq's latest browser-based software offers a flexible and secure solution for processing all offence types. It enables camera manufacturers, value added resellers and systems integrators to offer an end-to-end offence management solution to enforcement agencies internationally.

StarTraq Dome can be installed internally within the client's own network, or hosted securely on the Internet. It requires minimal or no upfront investment, no major hardware installations, no large software deployment on client computers and so reduces overheads.

StarTraq Dome's technology provides a flexible and future-proofed solution for enforcement processing in local and international markets, and can be cost effective for any size of organisation, big or small.

StarTraq Dome enables enforcement agencies around the world to automate the processing of all offence types captured by camera both efficiently and cost effectively. Offences captured by other media (for example, officer-issued tickets, mobile data) can also be uploaded to the system.

Typical offence types include:

- Traffic offences caught on camera such as speeding or running a red light
- Other traffic offences subject to local legislation, such as using a mobile phone while driving, or not wearing a seatbelt
- Congestion charging and road/toll charging
- Parking offences
- Environmental offences

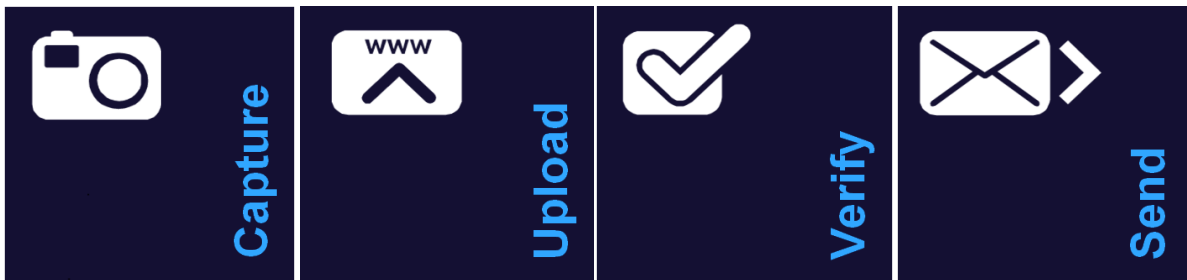
StarTraq Dome can be customised to deal with local legislative requirements, and translated into any language. It supports vehicle licence plate recognition in numerous languages including Arabic.

StarTraq Dome makes remote or "smart" working easy, while maintaining data security using the latest encryption protocols.

StarTraq Dome offers a single back office solution for enforcement

What it does

StarTraq Dome enables users to upload offences captured from multiple offence media into the system, validate the offences and monitor the process then export the relevant data to a 3rd party software.



Benefits for customers

Flexibility: multiple offence types can be managed through a single system.

Security: can be installed in the customer's own network or private cloud, and the customer sets their own "permission" rules and groups.

Management Information: Analysis and statistical reports can be generated using simple "drag and drop" tools. No extra reporting tools are required.

Ease of Use: the interface is intuitive so enabling speedy loading and verification. The system allows multiple user access simultaneously.

Partner Programme

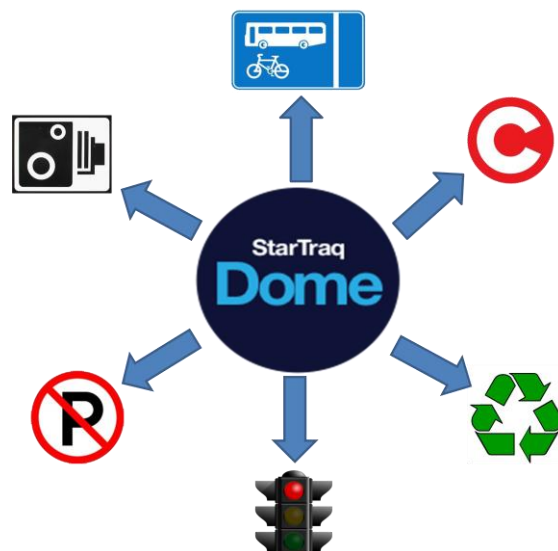
StarTraq Dome will be distributed outside the UK by a network of selected partners.

StarTraq Dome supports/can develop an interface with most camera types. The addition of this innovative back office solution to a hardware package enables partners to offer a seamless end-to-end solution to enforcement agencies around the world.

For details of the StarTraq Partner Programme, please go to:

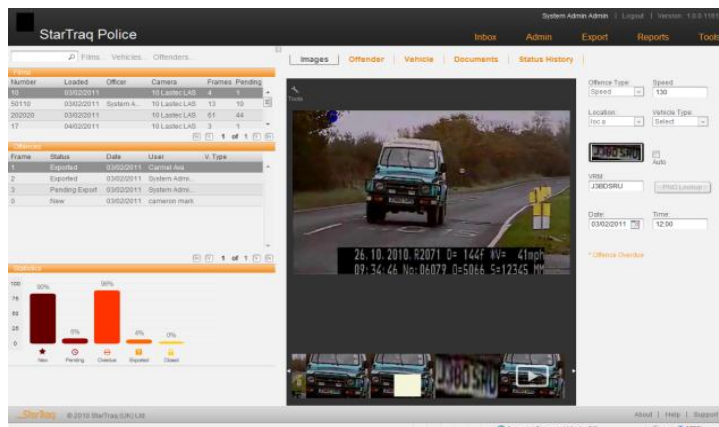
<http://www.startraq.com/Home/Partner-Programme/Reseller-programme.aspx>

The Total Enforcement Solution:





StarTraq Dome: the user experience



All elements of the offence are presented on a single screen.

Films and offences are listed on the left hand side, and specific offence data on the right hand side, including images, video clips, offender and vehicle details.

Administrators are able to view the system on a micro and macro level, so that they can for example monitor individual user performance, and produce management statistics for multiple regions.

StarTraq Dome's interface has a number of modern and user-friendly features, including:

- Powerful search engine available across all data, including smart logic
- Friendly work-flow wizard that allows the user to "control their own destiny" of how they want the system to work
- Video and audio can be associated to an offence as primary evidence
- Thumbnail images, videos, audio files are all easy to view
- Image tools to enhance images and also allow privacy setting to obscure offender's face as required
- Templates for correspondence are independent of MS Word, thereby negating the need for an MS Word licence.

FOR FURTHER INFORMATION PLEASE CONTACT

StarTraq (UK) Ltd, StarTraq House
Banbury Office Village
Noral Way, Banbury
Oxon, OX16 2SB
United Kingdom

+44 (0) 1295 273 000
Info@startraq.com
www.startraq.com

Features

<p>Easily customised Graphic User Interface (GUI)</p>	<ul style="list-style-type: none"> • Menus and GUI elements are partially customisable. Specific elements can be shown or hidden, active or inactive. • Current system functionality caters to hot keys, allowing operators to customise personal interfaces according to personal preference. • The system can be customised to retrieve data from other sources, such as National Police databases. • The system can be customised to process different offence types depending on the customer's needs and environment.
<p>Multiple language support</p>	<p>The StarTraq Dome GUI supports multiple languages:</p> <ul style="list-style-type: none"> • Configure user interface in the language of the user. • Fully customisable to receive input and produce documentation and correspondence in many languages. • Built-in flexibility to support localised and customised operations, adhering to the local legislative and fiscal requirements. • Supports numerous currency formats • Supports vehicle license plate recognition in numerous languages, including Arabic.
<p>Flexible permission groups</p>	<p>StarTraq Dome permission groups are flexible, for maximal security. Users can be assigned to one or more permission groups. Examples of the types of users that can be defined in the system:</p> <p>Officer: Police Officer who documents or imports offences into StarTraq Dome User: Anyone who has a user name and password and can log into StarTraq Dome Manager: User who manages the team of back office validators Administrator: User who manages the StarTraq Dome system and assigns film to validator Validator: User who validates and exports offence groups, so that they only have access to relevant information.</p>
<p>Support for multiple camera types</p>	<p>The system currently interfaces with leading UK type approved cameras. Additional camera types and manufacturers can be added to the system, as required.</p> <ul style="list-style-type: none"> • StarTraq Dome has the capacity to interface with all Automatic License Plate Recognition (ALPR) cameras on the market that have standard interfaces. • StarTraq Dome handles both single-image and multiple image cameras including video • Wetfilm (35 mm) is developed, scanned and digitized before being imported into the StarTraq Dome system. • The system also handles manually written and PDA –produced offences from a wide range of ticket types. • Digital, DVD and VHS media from mobile cameras is processed automatically, using digital markers embedded in the media. • The system supports USB disk, flash disk, and SD memory, along with DVD/CDR processes for data capture.

Report generation and management	<ul style="list-style-type: none">• The Reports module enables users to easily create and update templates for reports based on offence data. Reports can then be generated in real time from these user-defined templates.• A daily dashboard is presented to the particular user that changes as workload adjusts, enabling the efficient deployment of resources• Dashboard includes an announcement tool for management to post announcements to users• Audit trail records the life cycle of an offence. Logins and logouts, error, offence viewing, offence deletion and offence completeness are all audited.
Secure software provides data privacy	<ul style="list-style-type: none">• StarTraq Dome uses a flexible and customizable user security grouping system, enabling sensitive information to be filtered and blocked from unauthorised access.• All information is stored in a secure centralized server and data is protected through physical and logical controls.• Passenger's faces and other data sensitive matters are dynamically blanked out. These pictures are presented on the internet site with the areas hidden, but the stored image is always stored intact.